

# cinno WiFi Scannr



## 使用操作說明

## Wave Center 主畫面說明

The screenshot shows the WaveCenter software interface. The top header includes the 'cino' logo and 'WaveCentre An Ultimate Wireless Management Tool'. The main area is divided into a 'Console' and a 'Logs' section. The 'Console' section displays a table of wireless devices with columns for Device Name, IP Address, COM, and HID. The 'Logs' section shows service logs with columns for Date & Time, Device Name, and Details. The interface includes a left sidebar with 'Setup', 'Exit', and 'About' buttons, and a bottom bar with 'Stop Server', 'Group Control', and 'Refresh' buttons. The 'Logs' section has 'Save', 'Clean', and 'History' buttons.

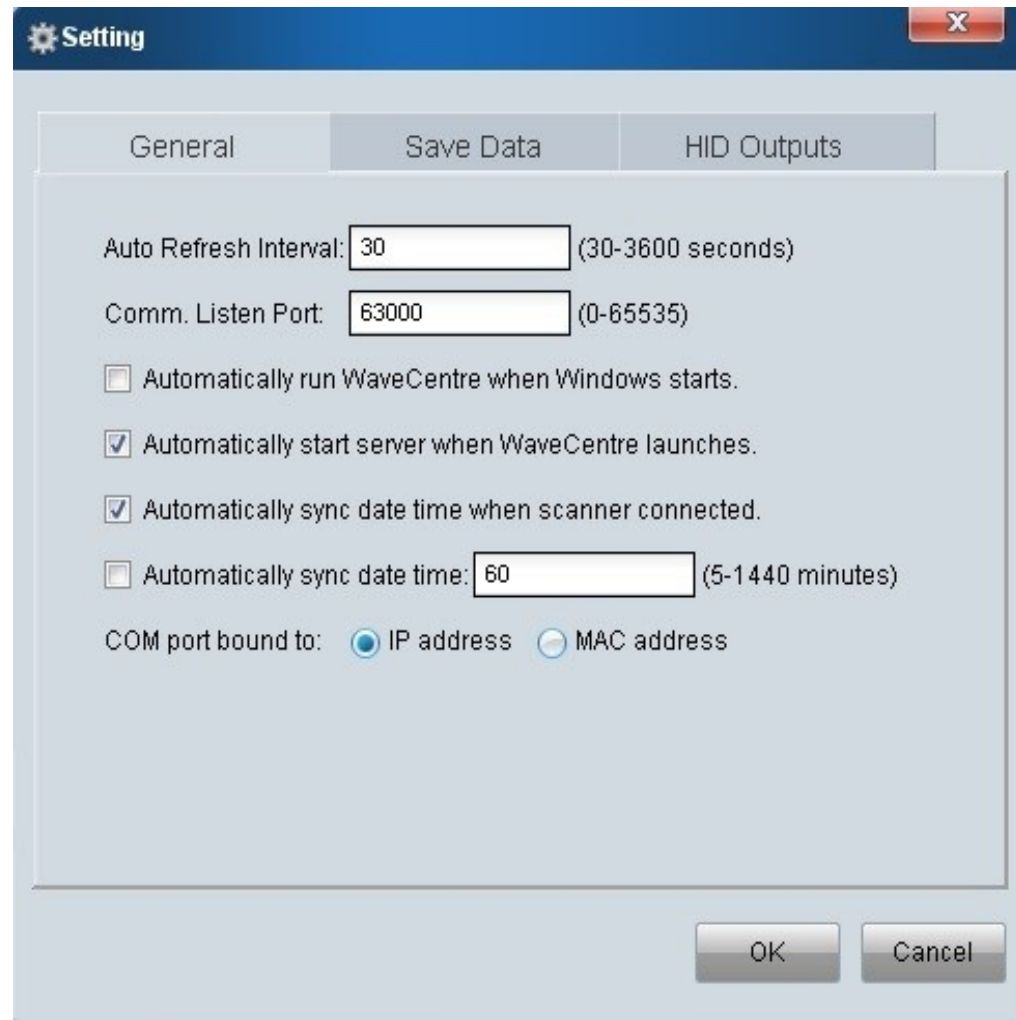
**Annotations:**

- 群體廣播及控制 (Group Broadcast and Control) - points to the 'Group Control' button.
- 是否開啟COM Port (Whether to open COM Port) - points to the 'COM' column header.
- 點選單支掃描器控制 (Click to control individual scanner) - points to the 'Device Name' column.
- IP與COM鎖定連結 (IP and COM lock connection) - points to the 'COM' column.
- 模擬鍵盤輸出 (Simulated keyboard output) - points to the 'HID' column.

LOG	Device Name	IP Address	COM	HID
<input checked="" type="checkbox"/>	F790WD-4585E	192.168.1.10	3	

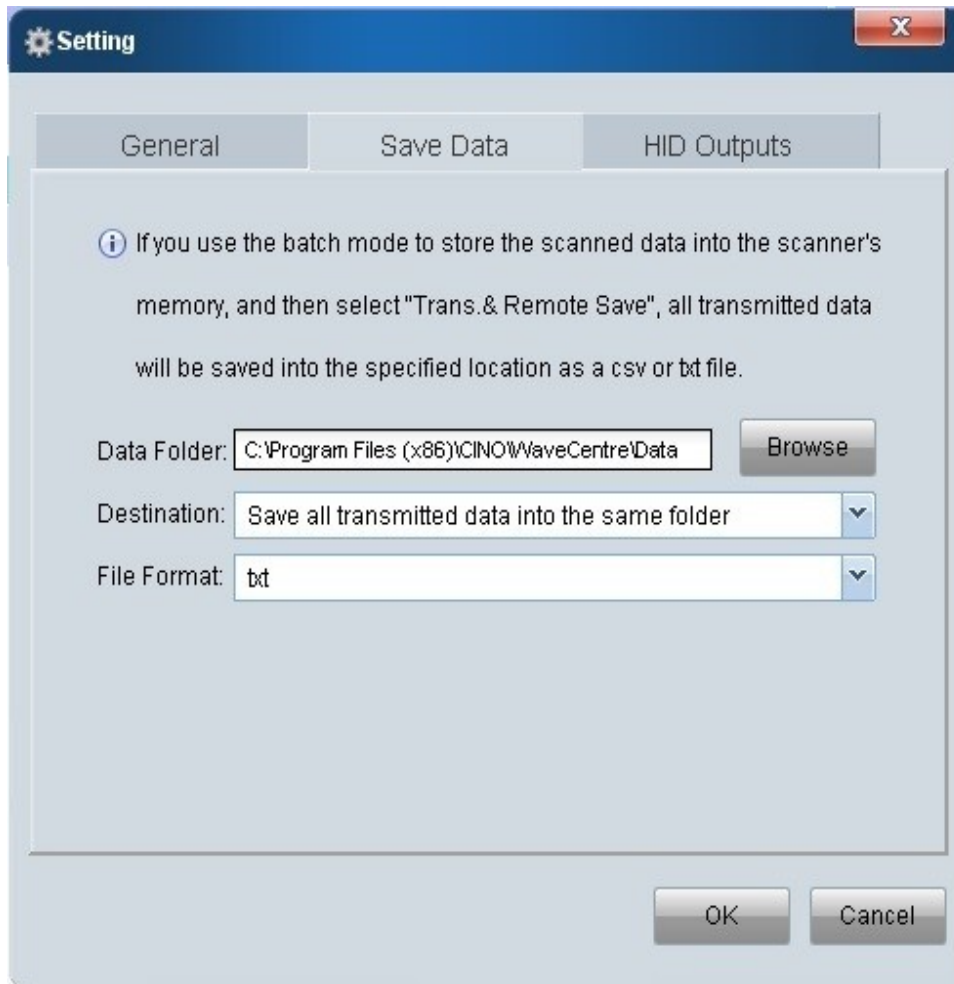
Date & Time	Device Name	Details
2013-03-21 2	system	Server start.
2013-03-21 2	F790WD-458	IP:192.168.1.1
2013-03-21 2	F790WD-458	Add device:19

## Wave Center 設定



每間隔30秒刷新 WiFi 連接  
設定使用的Socket Port  
開機自動執行 WaveCenter  
自動伺服Scanner  
同步時間 Scanner & PC  
自動每隔60秒同步時間一次  
使用IP或MAC來鎖定COM Port

## Wave Center 設定



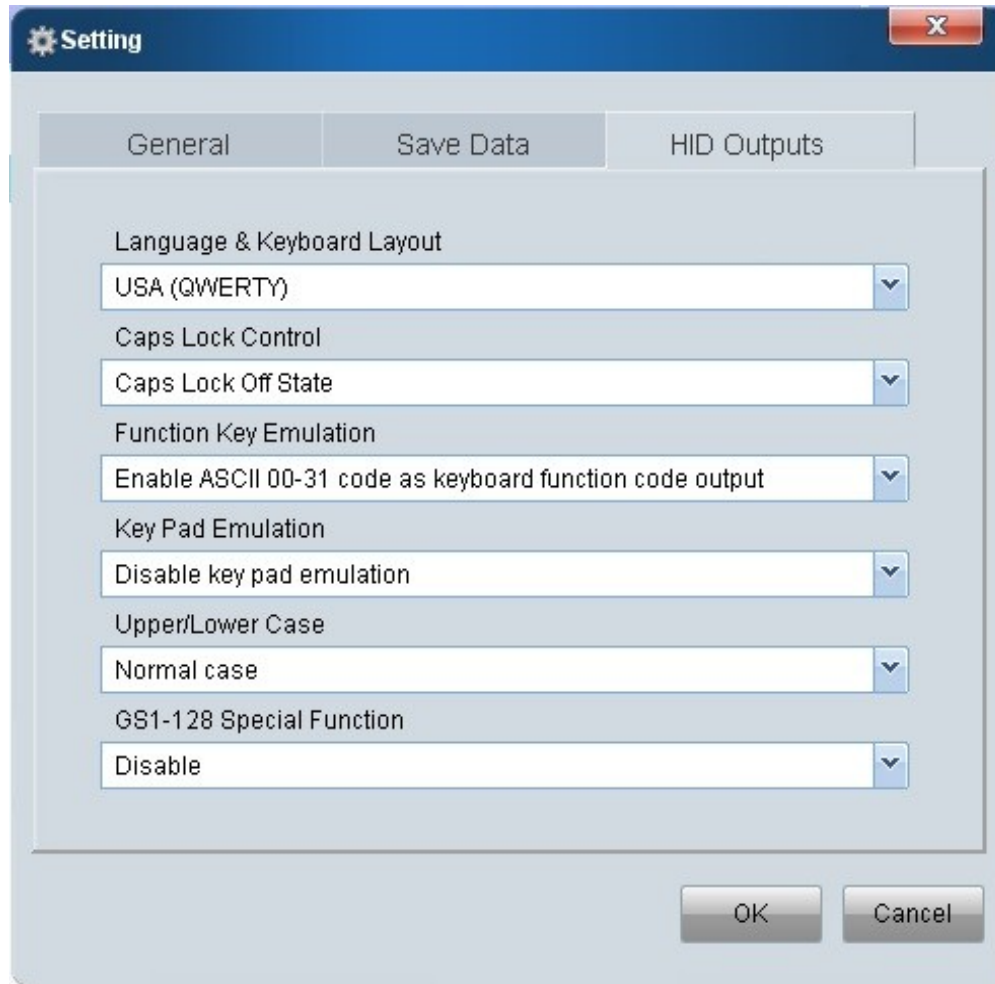
### 批次作業資料上傳設定

#### 上傳資料的儲存位置

1. 上傳資料存在相同錄目
2. 存在依產品名的次目錄下
3. 存在依日期的次目錄下

儲存資料的格式,txt, csv

## Wave Center 設定



鍵盤輸出相關設定

## Wave Center 主畫面說明

The screenshot shows the WaveCenter software interface. The top header includes the 'cino' logo and 'WaveCentre An Ultimate Wireless Management Tool'. The main area is divided into a 'Console' and a 'Logs' section. The 'Console' section displays a table of wireless devices with columns for Device Name, IP Address, COM, and HID. The 'Logs' section shows service logs with columns for Date & Time, Device Name, and Details. Annotations in Chinese point to various features: '群體廣播及控制' (Group Broadcast and Control) points to the 'Group Control' button; '是否開啟COM Port' (Whether to open COM Port) points to the 'COM' column; '點選單支掃描器控制' (Click to control individual scanner) points to the 'Device Name' column; 'IP與COM鎖定連結' (IP and COM lock connection) points to the 'COM' column; and '模擬鍵盤輸出' (Simulated keyboard output) points to the 'HID' column. The 'Logs' section has a red heading 'F790WD 登入/出之記錄' (F790WD login/logout record).

LOG	Device Name	IP Address	COM	HID
<input checked="" type="checkbox"/>	F790WD-4585E	192.168.1.10	3	

Date & Time	Device Name	Details
2013-03-21 2	system	Server start.
2013-03-21 2	F790WD-458	IP:192.168.1.1
2013-03-21 2	F790WD-458	Add device:19

群體廣播及控制

是否開啟COM Port

點選單支掃描器控制

IP與COM鎖定連結

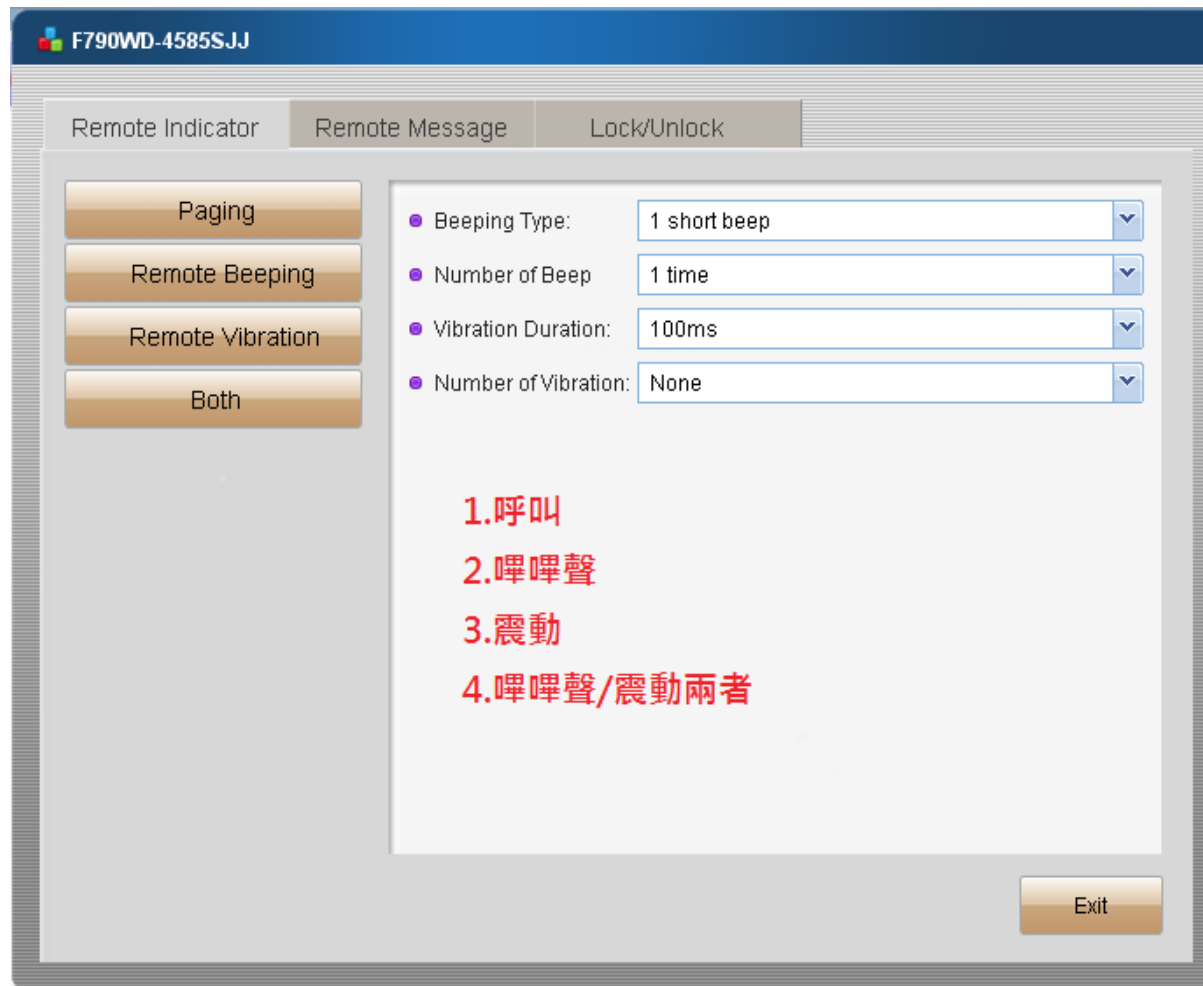
模擬鍵盤輸出

F790WD 登入/出之記錄

Stop Server Group Control Refresh Save Clean History

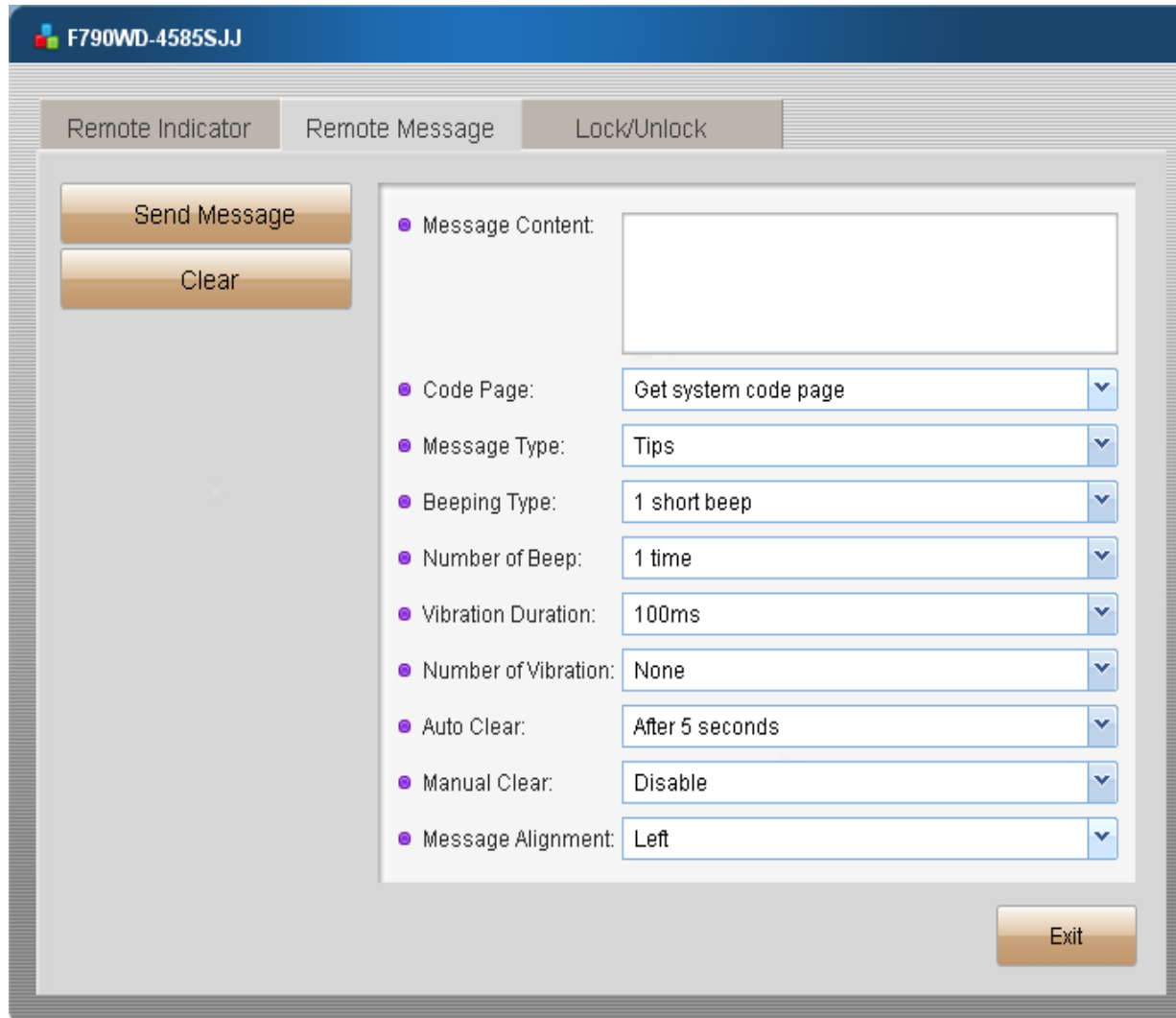
© COPYRIGHT CINO - PC WORTH INT'L ALL RIGHT RESERVED. www.cino.com.tw

## Remote Control 功能說明





## Remote Message 功能說明



F790WD-4585SJJ

Remote Indicator Remote Message Lock/Unlock

Send Message

Clear

- Message Content:
- Code Page: Get system code page
- Message Type: Tips
- Beeping Type: 1 short beep
- Number of Beep: 1 time
- Vibration Duration: 100ms
- Number of Vibration: None
- Auto Clear: After 5 seconds
- Manual Clear: Disable
- Message Alignment: Left

Exit

輸入傳送文字

選擇語系,例繁體950

選擇視窗ICON

選擇嗶嗶聲的長/短聲

選擇嗶嗶聲的次數

選擇單次震動時間

選擇震動的次數

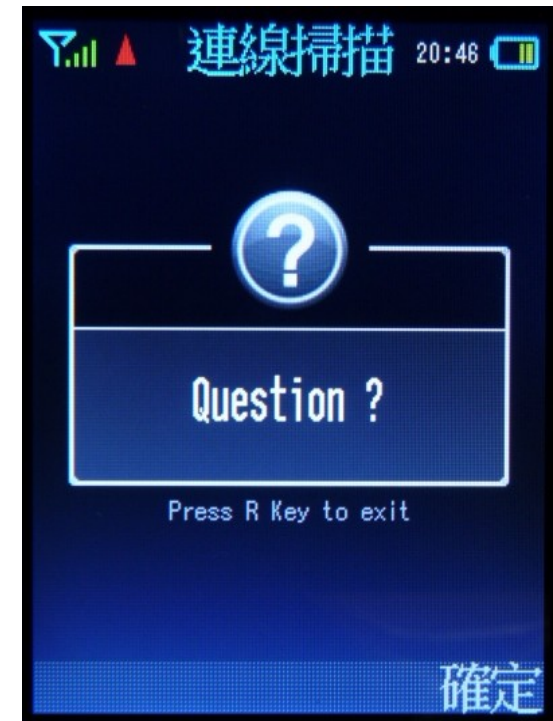
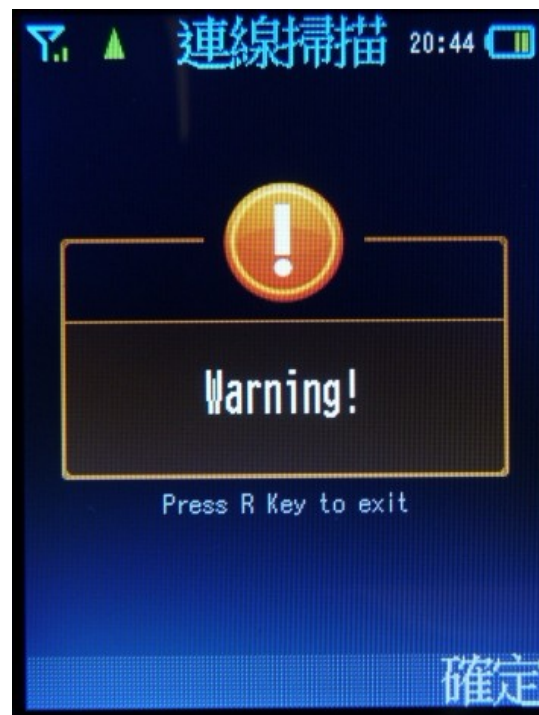
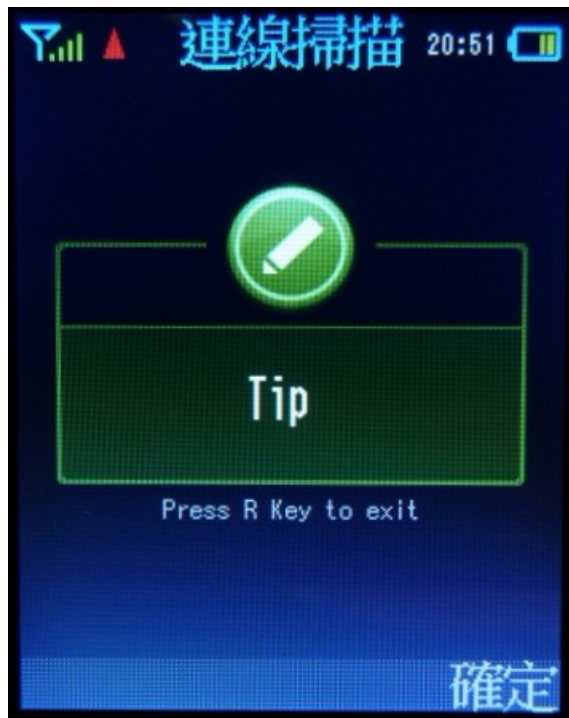
選擇幾秒後自動關閉視窗

手動關閉視窗選項

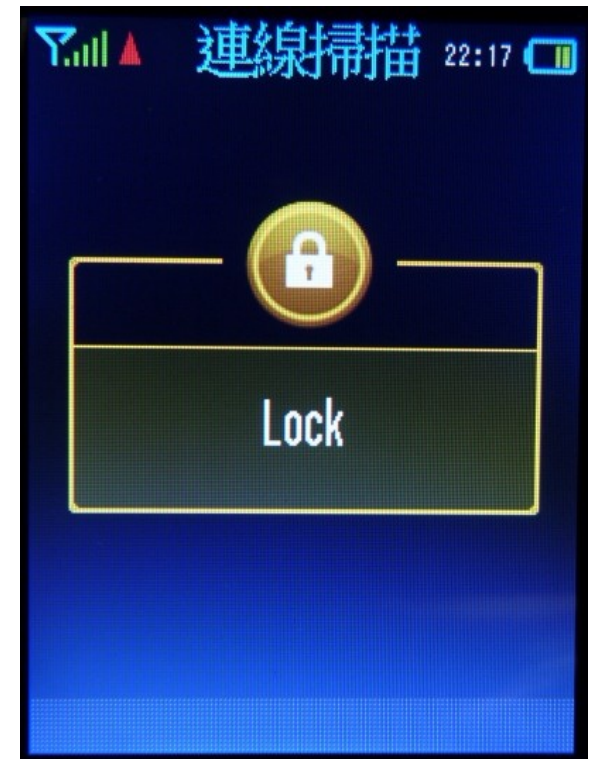
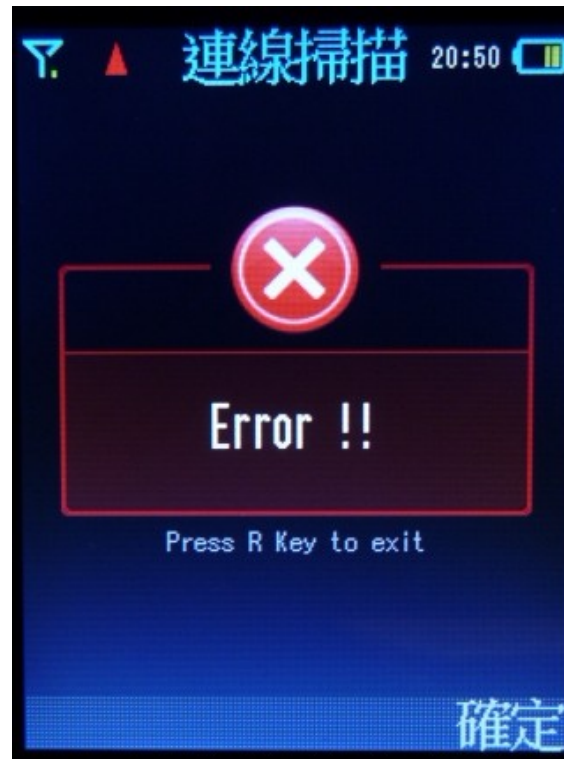
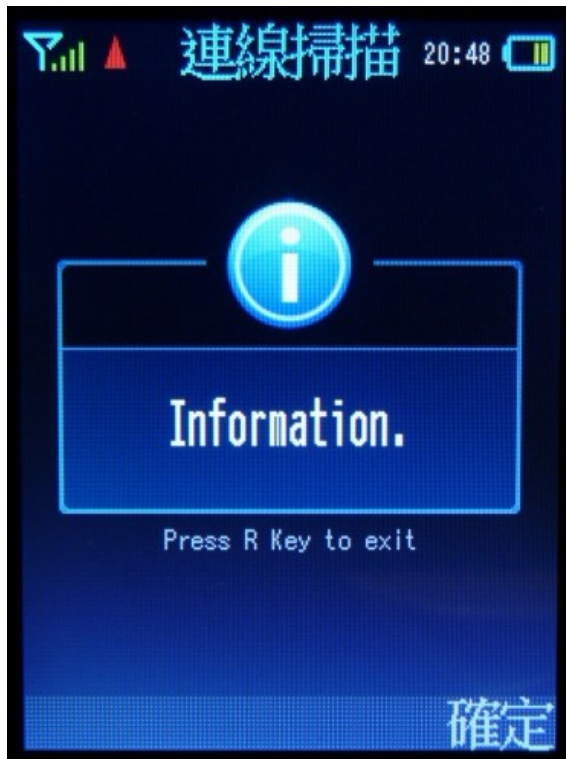
顯示文字靠左,靠右及置中



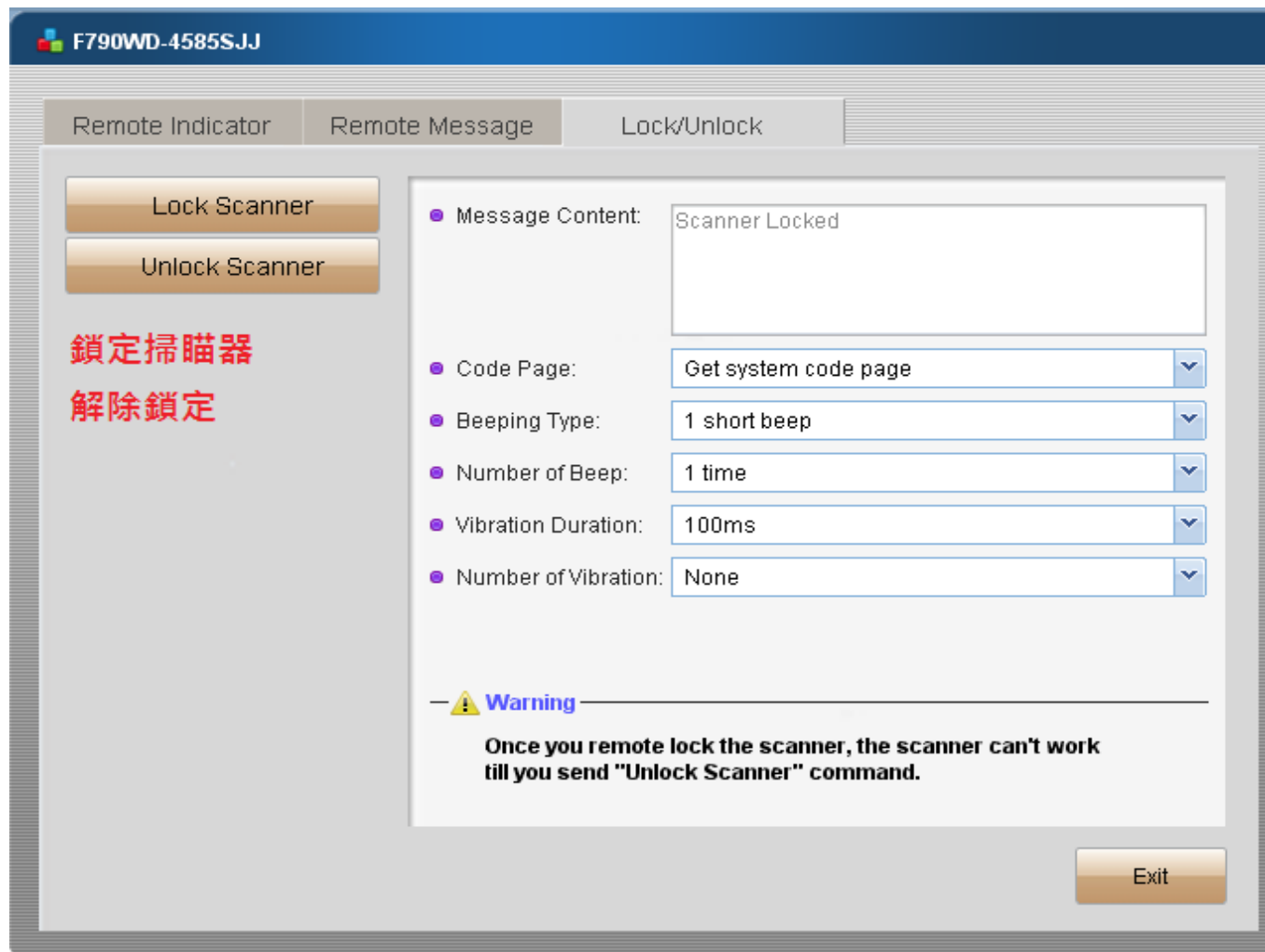
## Remote Message Icon 說明



## Remote Message Icon 說明



## Lock/Unlock 功能說明



## Group Control 功能

